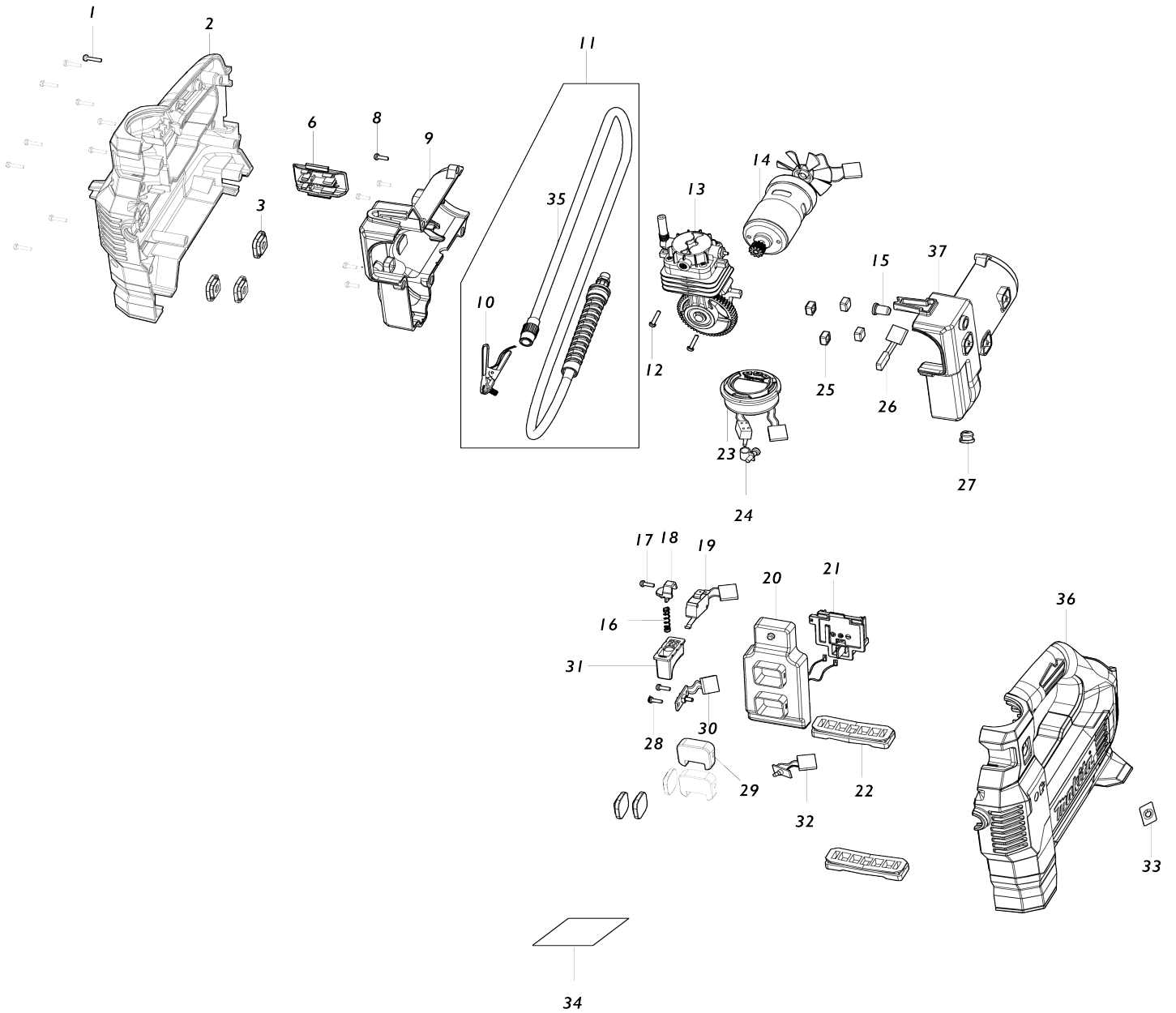


Model No.DMP181 CORDLESS INFLATOR



Model No.DMP181 CORDLESS INFLATOR

Item No.	Parts No.	Description	Interchangability	Q'ty	New/Old	Note1	Note2
C10	453974-8	LATCH		4			
A12	196875-4	BATTERY BL1415N SET		1	*		
A12-1	196875-4	BATTERY BL1415N SET	O	1	*		
A12-2	196875-4	BATTERY BL1415N SET	O	1			
A12-1	197122-6	BATTERY BL1450 SET		1	*		
A12-2	197122-6	BATTERY BL1450 SET	O	1			
A07	781044-6	HEX. WRENCH 6		1			
F02	192628-9	CROWN MOLDING STOPPER (L.R)		1			
001	TE00000028	TAPPING SCREW 3X14		10			
002	TE000000614	HOUSING SET		1			
D10		INC. 33,36					
003	TE000000595	INNER PAD		6			
006	TE000000593	FIXED BRACKET		1			
008	TE000000029	TAPPING SCREW 3X10		5			
009	TE000000596	INNER HOUSING SET		1			
D10		INC. 37					
010	TE000000597	BRITISH ADAPTER		1			
011	TE000000598	HOSE ASSEMBLY		1			
D10		INC. 10					
012	TE000000624	SCREW 4X6		2			
013	TE000000625	CYLINDER COMPLETE		1			
014	TE000000615	MOTOR ASSEMBLY		1			
015	TE000000600	RELEASE VALVE BUTTON		1			
016	TE000000330	SPRING		1			
017	TE000000029	TAPPING SCREW 3X10		1			
018	TE000000328	TRIGGER SPRING-FIXED BLOCK		1			
019	TE000000601	SWITCH		1	*		
019-1	TE000000601	SWITCH	O	1			
020	TE000000616	CONTROLLER		1			
021	TE000000424	BATTERY TERMINAL		1			
022	TE000000609	MAT		2			
023	TE000000617	DIGITAL DISPLAY		1			
024	TE000000352	CLAMP		1			
025	TE000000606	PAD		4			
026	TE000000607	THERMAL PROTECTOR		1			
027	TE000000604	PLUG		1			
028	TE000000029	TAPPING SCREW 3X10		2			
029	TE000000602	PLATE		2			
030	TE000000608	POWER SWITCH		1			
031	TE000000485	SWITCH TRIGGER		1			
032	TE000000610	LED CIRCUIT		1	*		
032-1	TE000000837	LED CIRCUIT	O	1			
033	TE000000426	SWITCH LABEL		1			
034	TE000000618	NAME PLATE		1			
036	TE000000614	HOUSING SET		1			
D10		INC. 2,33					
037	TE000000596	INNER HOUSING SET		1			

D10		INC. 9					
A01	TE00000592	BALL ADAPTER		1			
A02	TE00000333	SWIM RING ADAPTER		1			
A03	TE00000594	FRENCH ADAPTER		1			
F01	TE00000691	AIR CHUCK		1			
F02	TE00000796	AIR CHUCK		1			

Please state Parts No. when your order.

Print Date 06/10/2024