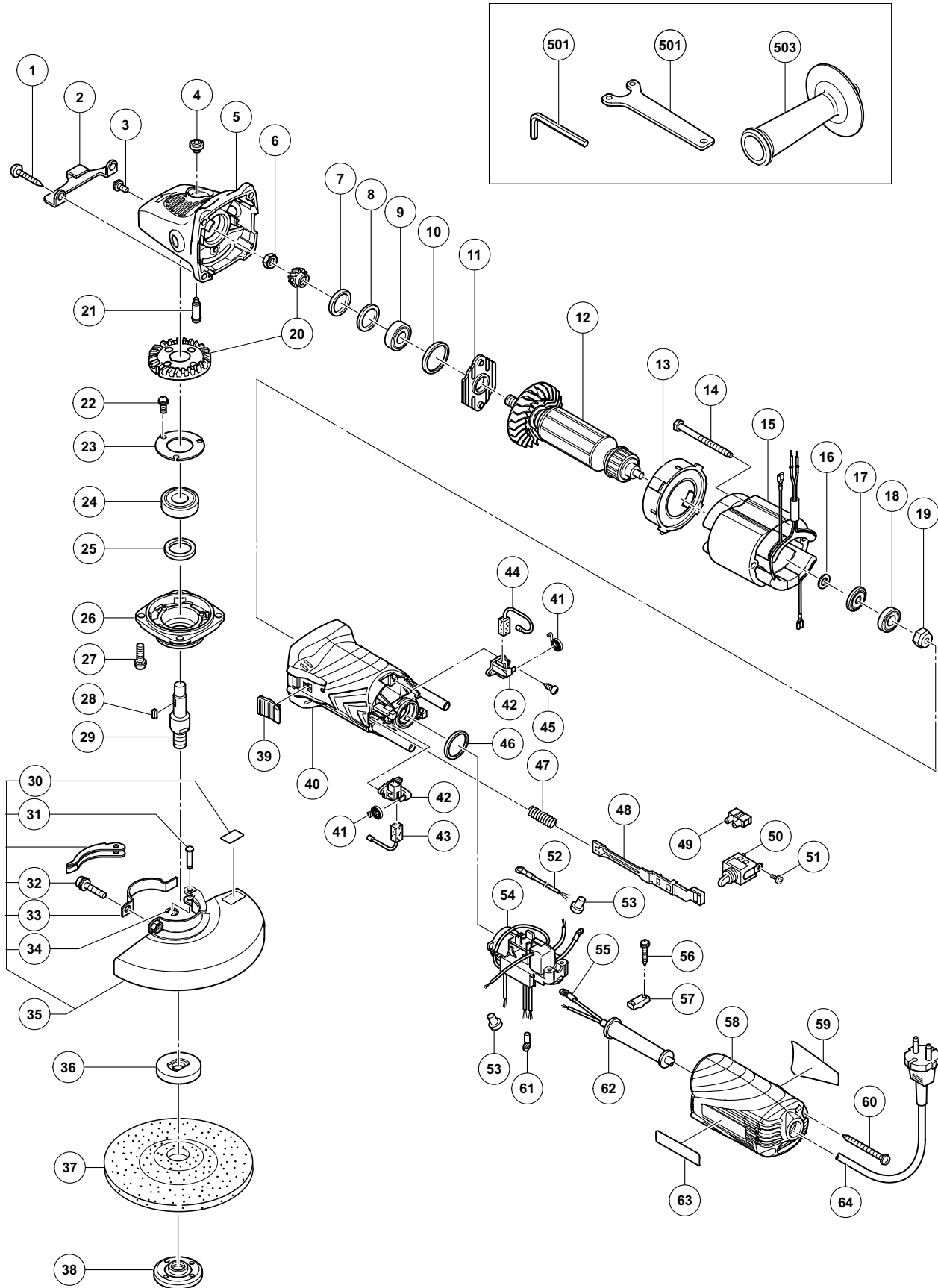


## ELECTRIC TOOL PARTS LIST

### DISC GRINDER Model G 15YF

2009·8·31  
(E1)



## PARTS

G 15YF

ITEM NO.	CODE NO.	DESCRIPTION	NO. USED	REMARKS
1	320-523	TAPPING SCREW D5 X 25 (BLACK)	4	
2	331-931	STOP PIECE	1	
3	303-255	SEAL LOCK SCREW (W/SP. WASHER) M4 X 10	2	
4	301-944	PUSHING BUTTON	1	
5	321-737	GEAR COVER ASS'Y	1	INCLUD. 4, 21
6	309-191	SPECIAL NUT M6	1	
7	308-543	SEAL RING (A)	1	
8	980-866	WASHER (C)	1	
9	629-T12	BALL BEARING 629T12DDC3PS2-L	1	
10	957-754	RUBBER RING	1	
11	321-734	BEARING COVER	1	
12	360-870E	ARMATURE 230V-240V	1	
13	321-732	FAN GUIDE	1	
14	982-021	HEX. HD. TAPPING SCREW D4 X 70	2	
15	340-749E	STATOR ASS'Y 220V-240V	1	
16	311-737	THRUST WASHER	1	
17	311-435	DUST SEAL (A)	1	
18	608-VVM	BALL BEARING 608VVC2PS2L	1	
19	325-475	MAGNET	1	
20	311-486	GEAR ASS'Y	1	
21	301-943	LOCK PIN	1	
22	991-207	SEAL LOCK SCREW (W/SP. WASHER) M4 X 8	3	
23	936-680	BEARING COVER (B)	1	
24	620-1DD	BALL BEARING 6201DDCMPS2L	1	
25	308-546	FELT PACKING	1	
26	308-545	PACKING GLAND	1	
27	307-046	SEAL LOCK SCREW (W/SP. WASHER) M5 X 16	4	
28	944-109	FEATHER KEY 3 X 3 X 8	1	
29	994-301	SPINDLE (A)	1	
30	311-492	LABEL	1	
31	311-744	SET PIN	1	
32	316-107	HEX. SOCKET HD. BOLT (W/WASHERS) M5 X 20	1	
33	311-491	SET PIECE (B)	1	
34	874-759	RETAINING RING (E-TYPE) FOR D2.5 SHAFT	1	
35	311-490	WHEEL GUARD ASS'Y	1	INCLUD. 30-34
36	937-817Z	WHEEL WASHER	1	
37	316-823	D. C. WHEELS 150MM A36Q (10 PCS.)	1	
38	994-324	WHEEL NUT M14	1	
39	330-810	SLIDE SWITCH KNOB	1	
40	330-808	HOUSING	1	
41	308-536	SPRING	2	
42	308-535	BRUSH HOLDER	2	
43	999-088	CARBON BRUSH (1 PAIR)	1	
44	999-076	CARBON BRUSH (AUTO STOP TYPE) (1 PAIR)	1	
45	306-945	TAPPING SCREW D3 X 10	4	
46	995-662	RUBBER RING	1	
47	314-429	SPRING	1	
48	330-811	SLIDE BAR	1	
49	938-307	PILLAR TERMINAL	1	
50	314-603	SWITCH (1P SOLDER TYPE)	1	INCLUD. 51



**STANDARD ACCESSORIES**

G 15YF

ITEM NO.	CODE NO.	DESCRIPTION	NO. USED	REMARKS	
501	944-458	HEX. BAR WRENCH 4MM	1		
502	325-491	WRENCH	1		
503	325-496	SIDE HANDLE (VIBRATION-ABSORBING)	1		

**OPTIONAL ACCESSORIES**

ITEM NO.	CODE NO.	DESCRIPTION	NO. USED	REMARKS	
601	310-338	SUPER WASHER	1		