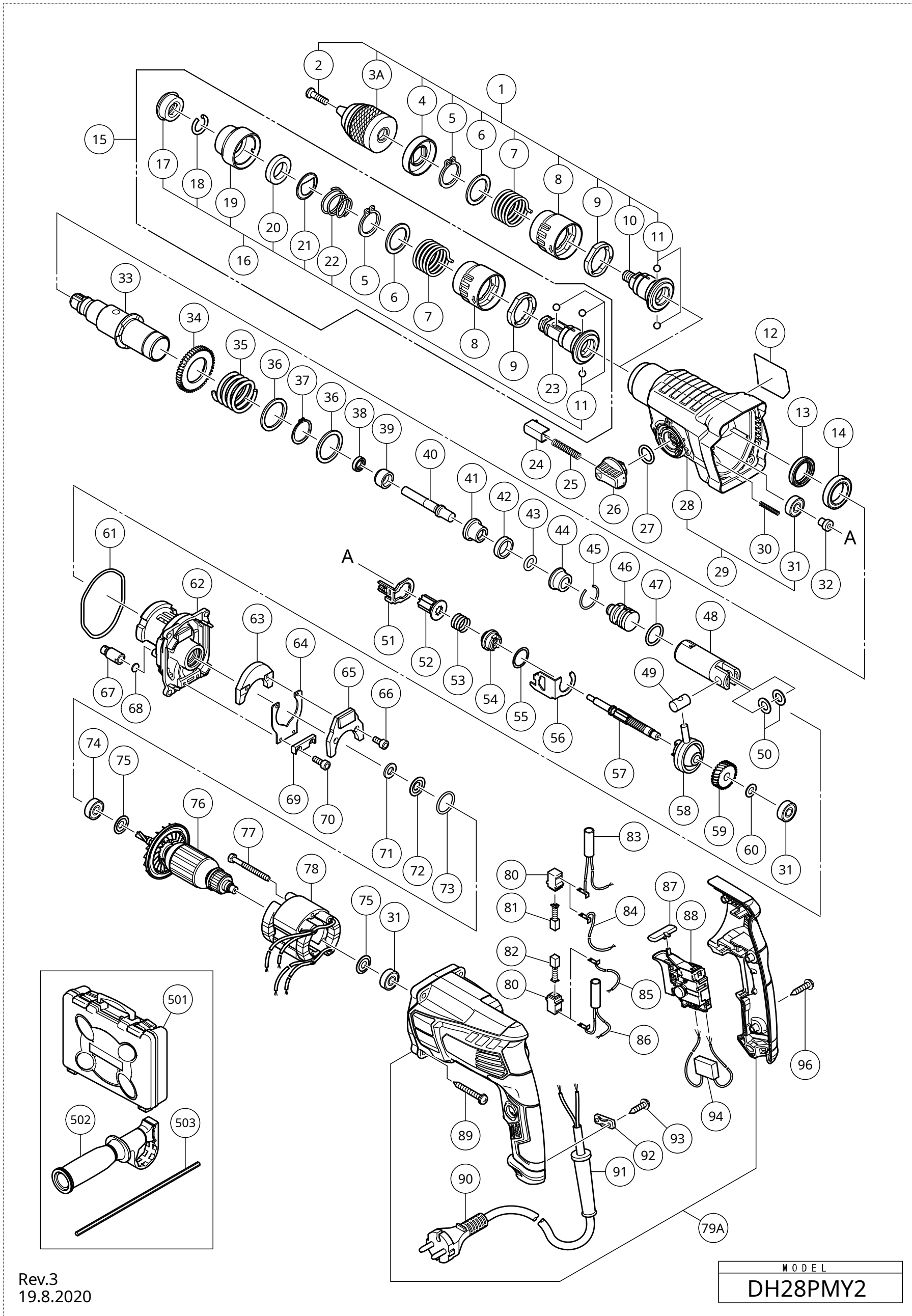




Az Ön kosara üres

DH28PMY2



Rev.3
19.8.2020

MODEL
DH28PMY2

Teljes alkatrészlista a(z) DH28PMY2 modellhez

Az alkatrész cikkszámára kattintva megrendelheti a kívánt alkatrészt. A rendelés új fülön (ablakban) fog megjelenni, így az adott modell alkatrészlistájához bármikor könnyen visszatérhet, és folytathatja a rendelést.

Szám	Cikkszám	Angol megnevezés	Darab	Megjegyzés	Modellnév	Kód
1	375012	CHUCK HOLDER (A) ASSY	1	INCLUD.2-11	DH28PMY2	PRT
2	995344	FLAT HD. SCREW (A) (LEFT HAND) M6X25	1		DH28PMY2	PRT
3A	375222	DRILL CHUCK 13VLRO-N (W/O CHUCK WRENCH)	1		DH28PMY2	PRT
4	326527	STOPPER	1		DH28PMY2	PRT
5	965469	RETAINING RING FOR D25 SHAFT	2		DH28PMY2	PRT
6	326520	WASHER (B)	2		DH28PMY2	PRT
7	326519	SPRING	2		DH28PMY2	PRT
8	375013	LOCK GRIP	2		DH28PMY2	PRT
9	326801	LOCK RING	2		DH28PMY2	PRT
10	375011	CHUCK HOLDER (A)	1		DH28PMY2	PRT
11	335300	STEEL BALL D7.0 (10 PCS.)	5		DH28PMY2	PRT
12		NAME PLATE	1		DH28PMY2	PRT
13	335259	OIL SEAL	1		DH28PMY2	PRT
14	6805BB	BALL BEARING 6805	1		DH28PMY2	PRT
15	375010	BIT HOLDER (A) ASSY	1	INCLUD.5-9.1 1.16.23	DH28PMY2	PRT
16	375363	GRIP SET	1	INCLUD.11(1 P C.).17-22	DH28PMY2	PRT
17	306345	FRONT CAP	1		DH28PMY2	PRT
18	306340	STOPPER RING	1		DH28PMY2	PRT
19	374436	GRIP	1		DH28PMY2	PRT
20	374437	BALL HOLDER	1		DH28PMY2	PRT

21	374435	HOLDER PLATE	1		DH28PMY2	PRT
22	322812	HOLDER SPRING	1		DH28PMY2	PRT
23	375009	BIT HOLDER (A)	1		DH28PMY2	PRT
24	322789	PUSHING BUTTON	1		DH28PMY2	PRT
25	317223	PUSHING SPRING	1		DH28PMY2	PRT
26	334011	CHANGE LEVER	1		DH28PMY2	PRT
27	878885	O-RING (S-18)	1		DH28PMY2	PRT
28	375005	GEAR COVER	1		DH28PMY2	PRT
29	375006	GEAR COVER ASSY	1	INCLUD.28.31	DH28PMY2	PRT
30	335800	SPRING (E)	1		DH28PMY2	PRT
31	608VVM	BALL BEARING 608VVC2PS2L	3		DH28PMY2	PRT
32	374422	SHAFT HOLDER (B)	1		DH28PMY2	PRT
33	375007	CYLINDER	1		DH28PMY2	PRT
34	335265	SECOND GEAR	1		DH28PMY2	PRT
35	374430	SPRING (B)	1		DH28PMY2	PRT
36	301679	WASHER (A)	2		DH28PMY2	PRT
37	948310	RETAINING RING FOR D30 SHAFT	1		DH28PMY2	PRT
38	335262	OIL SEAL (A)	1		DH28PMY2	PRT
39	375014	HAMMER HOLDER (D)	1		DH28PMY2	PRT
40	375008	SECONDE HAMMER	1		DH28PMY2	PRT
41	374429	HAMMER HOLDER (A)	1		DH28PMY2	PRT
42	322805	DAMPER (A)	1		DH28PMY2	PRT
43	322808	O-RING (C)	1		DH28PMY2	PRT
44	324524	DAMPER HOLDER	1		DH28PMY2	PRT

45	322807	STOPPER RING	1		DH28PMY2	PRT
46	374443	STRIKER	1		DH28PMY2	PRT
47	372816	O-RING	1		DH28PMY2	PRT
48	372817	PISTON	1		DH28PMY2	PRT
49	335793	PISTON PIN	1		DH28PMY2	PRT
50	335794	PISTON WASHER	2		DH28PMY2	PRT
51	374434	LOCK PLATE	1		DH28PMY2	PRT
52	374440	SECOND PINION	1		DH28PMY2	PRT
53	323182	CLUTCH SPRING	1		DH28PMY2	PRT
54	375022	CLUTCH	1		DH28PMY2	PRT
55	331315	WASHER	1		DH28PMY2	PRT
56	374439	CHANGE PLATE (C)	1		DH28PMY2	PRT
57	374438	SECOND SHAFT	1		DH28PMY2	PRT
58	335249	RECIPROCATING BEARING	1		DH28PMY2	PRT
59	374441	FIRST GEAR	1		DH28PMY2	PRT
60	374442	BEARING WASHER	1		DH28PMY2	PRT
61	335245	O-RING D72.2	1		DH28PMY2	PRT
62	374625	INNER COVER	1		DH28PMY2	PRT
63	374627	WEIGHT (A)	1		DH28PMY2	PRT
64	335282	LEAF SPRING	1		DH28PMY2	PRT
65	374628	WEIGHT (B)	1		DH28PMY2	PRT
66	325241	SEAL LOCK HEX. SOCKET HD. BOLT M3X8	2		DH28PMY2	PRT
67	334008	AIR CAP	1		DH28PMY2	PRT
68	324543	FELT PACKING (A)	1		DH28PMY2	PRT
69	374626	SPRING HOLDER	1		DH28PMY2	PRT

70	983162	SEAL LOCK HEX. SOCKET HD. BOLT M4X12	2		DH28PMY2	PRT
71	322816	FELT PACKING	1		DH28PMY2	PRT
72	322818	PACKING WASHER	1		DH28PMY2	PRT
73	876796	O-RING (P-22)	1		DH28PMY2	PRT
74	608DDM	BALL BEARING 608DD	1		DH28PMY2	PRT
75	982631	WASHER (A)	2		DH28PMY2	PRT
76	361108E	ARMATURE (B) 220V-230V	1		DH28PMY2	PRT
77	981824	HEX. HD. TAPPING SCREW D4X45	2		DH28PMY2	PRT
78	341028K	STATOR (A) 220V-230V	1		DH28PMY2	PRT
79A	376297	HOUSING SET	1		DH28PMY2	PRT
80	955203	BRUSH HOLDER	2		DH28PMY2	PRT
81	999041	CARBON BRUSH (1 PAIR)	1		DH28PMY2	PRT
82	999072	CARBON BRUSH (AUTO STOP TYPE) (1 PAIR)	1		DH28PMY2	PRT
83	374615	CHOKE COIL (BROWN)	1	FOR EUROPE.RUS	DH28PMY2	PRT
84	374613	INTERNAL WIRE (BROWN)	1	FOR UAE.HKG. THA	DH28PMY2	PRT
85	374612	INTERNAL WIRE (BLUE)	1	FOR UAE.HKG. THA	DH28PMY2	PRT
86	374614	CHOKE COIL (BLUE)	1	FOR EUROPE.RUS	DH28PMY2	PRT
87	322853	PUSHING BUTTON	1		DH28PMY2	PRT
88	374610	SWITCH 220V-240V	1		DH28PMY2	PRT
89	301654	TAPPING SCREW (W/FLANGE) D5X35	4		DH28PMY2	PRT
*90	500390Z	CORD	1	(CORD ARMOR D8.8)	DH28PMY2	PRT

*90	500424Z	CORD	1	(CORD ARMOR D8.8) FOR UAE	DH28PMY2	PRT
*90	500440Z	CORD	1	(CORD ARMOR D8.8) FOR HK G	DH28PMY2	PRT
*90	500239Z	CORD	1	(CORD ARMOR D10.1) FOR TH A	DH28PMY2	PRT
*91	953327	CORD ARMOR D8.8	1		DH28PMY2	PRT
*91	938051	CORD ARMOR D10.1	1		DH28PMY2	PRT
92	937631	CORD CLIP	1		DH28PMY2	PRT
93	984750	TAPPING SCREW (W/FLANGE) D4X16	2		DH28PMY2	PRT
94	930039	NOISE SUPPRESSOR	1	FOR EUROPE.R US	DH28PMY2	PRT
96	301653	TAPPING SCREW (W/FLANGE) D4X20 (BLACK)	3		DH28PMY2	PRT
501	375015	CASE	1		DH28PMY2	STA
502	374447	SIDE HANDLE	1		DH28PMY2	STA
503	303709	DEPTH GAUGE	1		DH28PMY2	STA
601	306885	DUST COLLECTOR (B) ASS?Y	1	INCLUD.602.610	DH28PMY2	OPA
602	986802	DUST COLLECTOR ASS?Y	1	INCLUD.603-609	DH28PMY2	OPA
603	986803	DUST COVER	1		DH28PMY2	OPA
604	986804	SEAL COVER	1		DH28PMY2	OPA
605	948310	RETAINING RING FOR D30 SHAFT	1		DH28PMY2	OPA
606	958063	WASHER	1		DH28PMY2	OPA
607	959150	STEEL BALL D6 .35 (10 PCS.)	19		DH28PMY2	OPA
608	986805	OUTER RACE	1		DH28PMY2	OPA
609	986806	SOCKET	1		DH28PMY2	OPA
610	306910	SOCKET ADAPTER (B)	1		DH28PMY2	OPA
611	971787	DUST CUP	1		DH28PMY2	OPA

612	931844	STOPPER	1		DH28PMY2	OPA
613	321814	DRILL CHUCK 13VLRB-D	1	INCLUD.614	DH28PMY2	OPA
614	331966	FLAT HD. SCRE W (LEFT HAN D) M6X20	1		DH28PMY2	OPA
615	321813	DRILL CHUCK 13VLD-D	1		DH28PMY2	OPA
616	971511Z	+ DRIVER BIT (A) NO.2 25L	1		DH28PMY2	OPA
617	971512Z	+ DRIVER BIT (A) NO.3 25L	1		DH28PMY2	OPA
618	971794	ANCHOR SETT ING ADAPTER A W1/4	1		DH28PMY2	OPA
619	971795	ANCHOR SETT ING ADAPTER A W5/16	1		DH28PMY2	OPA
620	971796	ANCHOR SETT ING ADAPTER A W3/8	1		DH28PMY2	OPA
621	971797	ANCHOR SETT ING ADAPTER A W1/2	1		DH28PMY2	OPA
622	971798	ANCHOR SETT ING ADAPTER A W5/8	1		DH28PMY2	OPA
623	971799	ANCHOR SETT ING ADAPTER B W1/4	1		DH28PMY2	OPA
624	971800	ANCHOR SETT ING ADAPTER B W5/16	1		DH28PMY2	OPA
625	971801	ANCHOR SETT ING ADAPTER B W3/8	1		DH28PMY2	OPA
626	971802	ANCHOR SETT ING ADAPTER B W1/2	1		DH28PMY2	OPA
627	971803	ANCHOR SETT ING ADAPTER B W5/8	1		DH28PMY2	OPA
628	320859	SYRINGE (BLO W-OUT BULB TYPE)	1		DH28PMY2	OPA
629	944477	COTTER	1		DH28PMY2	OPA

630	982684	CENTER PIN (A) 109L FOR C ORE BIT D32-3 8	1		DH28PMY2	OPA
631	982685	CENTER PIN (B) 104L FOR C ORE BIT D45-9 0	1		DH28PMY2	OPA
632	335781	GREASE FOR R OTARY HAMM ER (500G)	1		DH28PMY2	OPA
633	335782	GREASE FOR R OTARY HAMM ER (60G)	1		DH28PMY2	OPA